

Community Classifieds

See ads on the web: www.americu.org "About Us"

Miscellaneous

The Oneida Branch has two sets of car keys; 1 Honda/Cool start/6m with many keys and, Store tags on green ring 2-4 keys on ring with store cards. 363-0148 x225

Victorian Style Couch; Blue/white/pale yellow, \$175. Call Betty, 337-2992

Tri-Valley YMCA One-Year Family Membership; Value of \$645. selling \$500/BO. 363-0869

Sansui Speakers; Set of 2, dark wood, 220W, 4 way, 6 speaker system, \$200. **Sansui Stereo Cabinet;** Glass front cabinet, \$50. **HP PC Set;** \$200. 639-3297

Kids Bedroom Set; In primary colors, bunk bed frame w/ladder, 6 drawer dresser w/mirror, 4 drawer dresser, & a door dresser w/a drawer & hidden shelves, \$500. 338-6506

Large Corner Computer Desk; With hutch, lots of storage, 52" wide, exc. cond., \$50. **Electric Organ;** Wurlitzer Funmaker Super Sprite, 3 tier keyboard, programmed rhythms & songs, FREE. 853-8682

New Toro Lightweight Power Shovel; Clears 300 lbs. of snow, 60 seconds, two brushes, was \$199, sell for \$75. 334-9073

John Deere 2955; 1990 85 HP, 4WD cab, loader & snowblower, \$26,000. 225-4554

One Complete Set Speakers; Two Audiobahn speakers, AMPS & box, 2 amps Elevation Pro Series, model A2400, 400 watts, dimensions: Length 31 3/4", width 23 1/4", height 16", \$400. 245-0618

Cooler Refrigeration; Electric plug in car or truck, \$20. **Rubbermaid Cooler;** Like new, \$20. **Coleman Ice Cooler;** For camper, \$20. **BBQ Grill;** Gas, 1 Large, 1 small, new burners, \$20. **Heater;** Electric w/thermostat, no flame oil heater, \$20. **Heater;** Electric w/temperature control, hot burner shows, \$15. **Three Chairs;** Folding chairs, exc. cond., \$7 ea. or all for \$20. **TV Stand;** 4 in all, folding for snacks & drinks, \$5. **Exercise Bike;** \$20. **Exercise Bike;** \$35. **Christmas Tree;** Small Artificial, w/Santa Claus, all trimmings, \$25. **Kitchen Table;** Small, round, w/ 2 chairs, \$35. **Microwave;** Montgomery Ward, \$20. **Coffee Table;** Black glass, \$10. **Bench;** Piano Stool, \$5. **Lamp;** Maple, swerve for reading, \$25. 337-6605 or 335-9134

Thomas the Tank Engine Toddler Bed; With attached toy chest, \$150. **Solid Wood Toddler Bed;** Light oak, with night stand, tall dresser, Kids Country, \$250. **Set of Five Play Mats;** Climbing, great for day care/home, \$75. **Circle Sit-In Play Mat;** Use with balls or toys, \$50. Call Theresa. 525-1587

Verizon Cell Phone; VX3300, add another phone to your existing account, \$15. 337-5664

Sun System; 250 HPS, air-cooled option, 4" ban & glass fitted lens, exc. cond., original packaging, factory warranty & receipts, 240/BO. 281-6738

Cab Cadet; 17HP, Hydrostatic & MYD lift & steering. 44" Mower, 42" snow thrower wheel mts, tire chains & vinyl cab, \$1,300/BO. 533-6035

Wood Pellet Stove; \$600. 336-3144

DECEMBER 15, 2007

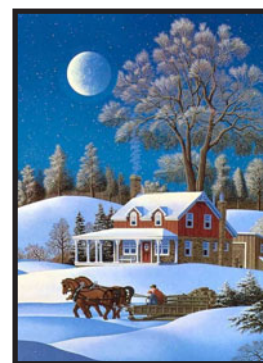
GUIDELINES AND DEADLINES
Members may place one (1) ad per issue, and no more than three (3) items per ad. PLEASE KEEP WORDING TO A MINIMUM & PRINT LEGIBLY. Please circle every category in your listing. We reserve the right to shorten ad content.

Community Classifieds is published by AmeriCU Credit Union, as a free service for our members. It is not for business or commercial advertising.

Ads must be received in the Branch Office by the 5th of the month for publication on the 15th of the next month. Ads will be published as received. If any ad is omitted because it was not received in the Headquarters Office by the deadline, it will be printed in the next issue.

The Credit Union reserves the right to edit, or reject any ad. We assume no responsibility for the dependability, value, description, or price of any item.

AmeriCU Credit Union assumes no responsibility for typographical errors in the printing of any advertisement except to print a correction.



AmeriCU
CREDIT UNION

Miscellaneous

Sink; Stainless steel, double sink & faucet. **GE Refrigerator;** Almond, 25 cu. ft., side by side, ice maker. **Jenn-Air Indoor Grill;** Double, electric. **Thermidor Cook Top;** Gas, white, 4 burners. All for \$400/BO. **339-1036**

Craftsman 10" Table Saw; With table, accessories, extra blades & owner's manual, exc. cond., \$80. **O'Sullivan Computer Desk;** On wheels, exc. cond., \$40. **Gateway Select 800 Computer;** 17" Flat monitor, keyboard, speaker system, Hewlett Packard and Deskjet printers, many extras, exc. cond., \$200. **O'Sullivan Computer Desk;** Exc. cond., \$40. **339-7581**

Coca Cola; Six pack in carrying case, old fashioned glass bottles w/ Nascar #88, Dale Jarrett on bottles. Case has Coca Cola Nascar racing family, never opened, glass bottles w/metal caps, 1999, \$25. **Two Coca Cola Six Pack;** Old fashioned glass bottles w/metal caps in carrying case, 3 bottles full, 3 empty, all have metal caps, \$10. **Jeff Gordon 1:24 Action 1977 Monte Carlo Chroma Premier Limited Edition;** Adult die cast collectible car bank, 1 of 28,000, mint, in box, \$150. **Jeff Gordon 1:24 Action Pepsi Racing Limited Edition;** Adult die cast collectible car, #11,093 of 27,264, mint, in box, \$60. **338-0535**

Nordic Track Pro Exercise Unit; With workout computer pulse viewer, solid oak & steel construction, \$200. **Inline Skates Made by Rollerblade;** Pro 2000, women's size 7, \$40. **Ham Radio Transceiver;** Kenwood 7730 2M, \$35. **525-1100**

Harden Low Boy; Georgetown finish, \$300. **24" Bar Stool;** Green padded top, \$12. **FREE:** Compac Presario with Windows 95; Computer & Monitor. **336-2744**

Miscellaneous

Jeff Gordon 1:24 Winners Circle 1999 Superman; Adult die cast collectible car, \$50. **Jeff Gordon 1:24 Winners Circle 2001 Bugs Bunny Looney Tunes Monte Carlo;** Limited Edition adult die cast collectible car, \$100. **Rusty Wallace 1:24 Scale Action 1996 25 years in Racing;** Adult die cast collectible car in factory mounted case, mint, in box, \$100. **Dale Earnhardt 1:24 Action Olympic Atlanta;** red, white & blue car bank on a rose adult die cast collectible car, mint, in box, \$175. **338-0535**

Swiss Made Sewing Machine; Elna 60s Model, w/all attachments, \$50 or B/O. Leave phone number to call back, **736-4013**

Lafayette Reel to Reel Stereo Tape Recorder; Exc. shape w/2 mics & full reel tape, \$65. **Westinghouse Porta Tape;** Very good shape, needs reel, \$65. **SONY 5130ST Tuner;** Exc. shape, chrome face, all metal case block, \$80. **Fisher Pro 440 Series Receiver & Stereo Tuner;** Wood outside of metal case, \$80. No phone number listed.

Toddler Girls Winter Boots; New, pink, Princess, size 5, \$10. **Toddler Girls Winter Boots;** New, pink, Stride Rite, size 6, \$15. **339-0973**

Wood Lathe; 37", 5-speed w/ bench & tools. By Central Machinery, SKU #6841, \$85. **337-4756**

Shopsmith MARK V; Wood working system w/table saw, lathe drill press, manual, accessories & 18" magna jig saw, \$400. **337-9569**

Wrestling Fans: Great Christmas Gift!; Adult size WWF replica belt, 46" waist, ok cond., \$120 - \$100. **Sega Dreamcast;** Almost brand new, only played a few times, still in the box w/4 games, \$50. Ask for Anthony, **601-4342 or 821-6429**

75 Gallon Aquarium Setup; Filter, gravel, etc., stand, \$350. **525-8434**

Miscellaneous

Schwinn 31 lb. Flywheel Exercise Bike; Model DX 900, original price \$465+, exc., \$150. **9' Puleo Artificial Green Christmas tree;** With stand, \$50. **Proform Incline/Decline Weight Bench;** Squat rack, lat, preacher & leg extensions, iron grip 6' barbell, locks & 185 weights, total pkg., \$175. **482-2179**

GE Adora Front Load Clothes Dryer; Electric, 18 months old, GE Model #DBVH512EFWW, white, 7.0 cu ft., \$750 new, sell for \$500. **245-4819**

Weider Weight Bench; With weights & many accessories, hardly used, v.g.c., must sell, \$90 or B/O. **Clopay 8 x 7 Garage Door;** New, no windows, slightly damaged on inside, all accessories, \$300 new, \$150 or B/O. **Bathroom Fixtures;** Many sets to choose from, \$15-\$25 or buy all for one set price. **Medicine Cabinet;** All new, great deal, \$20-\$40. **865-8439 or 271-1082**

HP Deskjet 840c Series Printer; It works great, just upgraded, \$25. **HP Scanjet 3500c Series Scanner;** Works, just upgraded, \$25. **Microsoft Natural Keyboard;** \$10. **2-Light Pink Dance Skirts or Multi Colored Skirts;** Handmade & new, \$13 each. **829-4637**

4 Drawer Maple Dresser; \$50. Wood Desk; 4 Drawer w/attached computer table on side, \$75. **Elan Downhill Skis with Poles;** Boots; With carrying case, 11 1/2, \$80. **1 Drawer Night Stand;** \$15. **337-5451**

20' Tall Balsam Fir; Live Christmas Tree, \$15. **4' Norfolk Island Pine;** House plant \$10. **8 Piece College Dissection Kit;** Includes plastic case, \$10. **Sears "Whole House;"** High Velocity Fan; Six speeds, intake & exhaust, \$15. **337-3084**

Miscellaneous

TI-84 Plus Graphing Calculator; With USB computer cable & owner's manual, used once, \$90. **GRACO Pack & Play Bassinet;** \$40. **Coleman Portable Camp Stove;** Model 425F; With adapter for propane cylinder, no fuel tank,, \$20. **Stanley Joiner Planer;** Model 31, \$25. Please leave msg. **337-3084**

Sun System; 250 HPS, air-cooled option, 4" ban & glass fitted lens, exc. cond., original packaging, factory warranty & receipts, 240/BO. **Two MA 1000 Amplifiers;** 1 MA 3200 amplifier, 2 SPL 12' subwoofers, SPL rim 700 cms each w/ all cables & deck, \$1,500/BO or trade EC system. **281-6804**

Winter Coats for Children; New, tote waterproof boots, girls size 13M, call for prices. **Women's Boots;** One size 6, brown & high and one size 6 1/2, black & low, new, \$30. **Air Jordan 7 Retro;** Size 9 1/2 mens, black/red, \$40. **Graco Twin Stroller;** Side by side, exc. cond., used 3 times, must see, \$60. **339-1053**

Overstuffed Couch; 3 Seater, overstuffed chair, 2 seater, must sell, \$500/BO. Will separate. **Glass Top Coffee Table;** Must sell, \$75/BO. **XBox;** 3 Controllors & DVD Remote, plus 10 games, \$200/BO. **382-2008**



Not Actual Photos



Automobiles

Motorcycle Helmet; HJC Street, angler, full face, XL, \$35. **Motorcycle Helmet;** HJC FG#, with visor, L, \$20. **Motorcycle Helmet;** CKX with visor, L, \$20. **942-5449**

1997 Dodge Intrepid; Body exc., 88K+ miles, runs well, just inspected, on road daily, \$3,500 or B/O. **363-0869**

1998 Chevy S10 Truck; Good Shape, \$1,200/ **1988 Ford F350 Truck;** \$1,500/BO. **1984 Ford F250;** With plow, \$3,500/BO. **Plow Frame;** BOSS, fits late 1980-1990 Ford F250-350, \$200/BO. **534-1902**

Four Cooper Weathermaster S/T; Studded, 195/60 R15, \$300/BO. **Two Cooper Weathermaster S/T;** Studded, 155/80 R13, \$100/BO. **Four Cooper Discover M&S;** Studded, LT 265/70 R17, \$500/BO. **336-9018**

1999 Mazda 626 LX; Very good cond., 100K miles, \$2,900. **339-2673**

Snow Tires; 4 Brand new, used one season, size 185-65-15, \$100. **361-4641**

1997 Buick Park Ave Ultra; Green, low miles-70K, heated seats, 25 m.p.g., one owner, \$6,500. **790-0889**

1996 Dodge Stratus Sport; No rust, no winters, well kept, 5 speed, standard, AC, power locks, windows,, lifetime alignment, 2 brand new tires, \$995 firm. **Trailer;** Twin axle, 6 x 16, heavy duty stand, 7000 GVW 2 5/16 ball, \$900 firm. **Trailer;** Heavy duty axle & tires, 5 x 12, 2" ball, \$500 firm. **1995 Ford Taurus;** Electric locks and windows, new radiator, brakes, drums, rotors, rebuilt trans. by Cottman Trans 1 1/2 years ago, good winter car. Can be seen at 105 Snowdale Drive, Syracuse, \$600. **447-6989**

Automobiles

2003 Dodge Durango; Loaded, 4 WD, leather, heated, exc. cond., \$15,500. **2004 Sienna XLE;** Loaded, heated leather, power doors, 4 new tires, 52K miles, \$17,000. **2004 Jeep Grand Cherokee;** Excellent cond., 4 WD, 55K miles, \$13,500. **336-6182**

Snow Tires; Four mounted on GM five bolt steel wheels, Blizzak WS50, 2 brand new size 195-75-R14. **339-1969**

MUST SELL - NEED GARAGE SPACE! 1994 Chrysler New Yorker; 95K Miles, air, power windows, seats, locks, dual front airbags, cruise, rust on rocker panels, good running cond., excellent winter car, NADA \$2,425. Reduced to \$700. **339-0834**

1981 Maxim; Runs great, rebuild kit, rebuild never finished, new exhaust, seat, tires, dented gas tank w/paint, \$1,800 or B/O. **281-6804**

Two Cooper Snow Tires; Studded, like new, P165/80R13, \$60 pair. **Two Snow Tires;** Mounted on GM Rims, P215/75R15, \$60 pair. **737-7053**

1995 Lincoln Town Car; Signature series, former limo car, well maintained, highway miles, many new parts, very good cond. in/out, strong motor, need some work, \$995 or B/O. **865-8439** or **271-1082**

1996 Buick; Regal, 4 door, 3.8 V-6 auto, 137K miles, runs great, \$995 or B/O. **865-5821**

1994 Toyota 4x4 Extended Cab; V-6, fiberglass cap & 4 brand new tiers, \$4,450. **339-1089**

1999 Nissan Pathfinder XE; Runs great, 4x4, 5 speed, fog lights, sun-roof, AC, cassette, tow package, rear spoiler, new tires, 76K miles, \$6,500/BO. **336-4458**

Recreational

1999 United 4 Snowmobile & ENCLOSED Trailer; \$3,995. **339-1089**

2006 Yamaha Wolverine 450 4x4; Low hours, \$5,000/BO. **2006 Yamaha Kodiak 450 4x4;** Low hours, \$5,000/BO. **Utility Trailer;** With ramp, 5 x 8, \$500. **725-7773**

2006 Ski-Doo MXZ 500X; New condition, very low miles, includes single trailer, Ski-Doo cover & tunnel bag, **\$4,899. 1+1 Seat For 2006 Ski-Doo MXZ 500X;** Like new, retails for \$519, asking \$350. **337-9531**

2005 Polaris 900 Fusion IZ; 50th Anniversary, w/transfer 2 year factory warranty, all updates & receipts, 1 adult owner, 1,900 miles, garage kept. LN, push button reverse, skid plate, extra belt, Rider Select Steering, digital-multi function display, liquid cooled, 1.25" Ripsaw track, \$4,800. Rome area **335-4104**

2007 Honda ATV 450R; Electric and kick start, H4 gear susp., many extras, very good cond., \$5,500 negotiable. **225-0475**

1996 Ski-Doo Formula ITT; Exc. cond., 1,600 miles, hand warmers, \$1,700/BO. **363-1483**



Online Services will be unavailable Sunday, December 16th from 1am - 4 am, EST for scheduled maintenance. We apologize for any inconvenience.



ATM LOCATIONS

ROME

231 Hill Road
6000 School Road
1916 Black River Blvd.
Griffiss Technology Park

YORKVILLE

4957 Commercial Drive

ONEIDA

280 Genesee Street

SYRACUSE

6303 Thompson Road

LIVERPOOL

7474 Oswego Road

AUBURN

Auburn Plaza-217 Grant Ave.

WATERTOWN

Riva Ridge, Bldg. - P10750
Fort Drum

CREDIT UNIONS

Together We're Better.



Holiday Hours

Christmas Eve

Monday December 24, 2007
Early closing at 2pm

Christmas Day

Tuesday, December 25, 2007
Closed

New Year's Eve

Monday, December 31, 2007
Early closing at 2pm

New Year's Day
Closed

Pets

Registered Missouri Foxtrotter, Mare, 8 years old, well mannered, gentle, an easy keeper, lovingly cared for, all shots current, \$4,000. **292-2217**



Not Actual Photo

Free

Electric Organ; Wurlitzer Funmaker Super Sprite, 3 tier keyboard, programmed rhythms & songs. **853-8682**

Compac Presario with Windows 95; Computer & Monitor. **336-2744**



Not Actual Photo

Wanted

Wanted: .222 Caliber Rifle; Pocket Remington Model 600, will consider a other. **336-4044**

Looking for Newer Snowmobile, Bike, Laptop, etc. **281-6804**

Wanted: L.P.s and 45s - older ones. **337-2294**

Looking for any types of **Christmas & Halloween Decorations, and animated things.** Ask for Anthony **601-4342 or 821-6429**